



LINEAR VARIABLE DISPLACEMENT TRANSDUCERS - PJs series

Transducers of this type are a group of AC/AC transducers (sensors) based on differential transformer principle. AC/AC group means without electronic components inside. They are used to measure: position, displacement, movement, distance, height, length etc. The main application of this type is to measure servo motor's piston position.

CHARACTERISTIC

- Compact construction
- Harsh environment application
- High accuracy
- High reliability

CONSTRUCTION

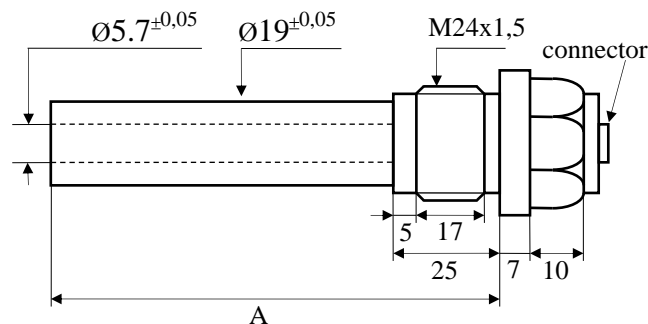
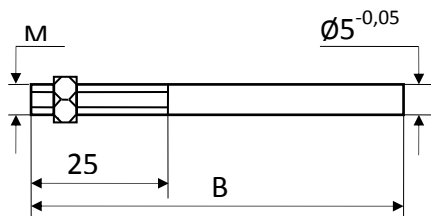
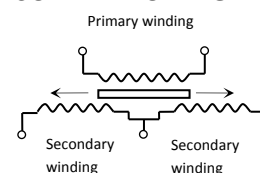
The basic element of this sensors is a differential transformer placed inside a cylindrical enclosure. Inside the transformer there is a magnetic core. The core's position affects the output signal amplitude converting displacement to electric signal.

TECHNICAL DATA

Sensor type	PJs50	PJs100	PJs200	PJs500
Measure range [mm]	±25	±50	±100	±250
A [mm]	188	273	373	701
B [mm]	175	245	324	670

1	Power supply	<ul style="list-style-type: none"> • 2Vrms, 5kHz • 2Vrms, 1kHz (option)
2	Output signal	<ul style="list-style-type: none"> • 1V rms ±10 % • 2V rms ±10 % (option)
3	Linearity [% MR]	<ul style="list-style-type: none"> • ≤0,5 • ≤0,25 • ≤0,1
4	Working temperature [°C]	from -20 to +120
5	Max. working pressure [bar]	350
6	Max. pressure [bar]	450
7	Electrical connector	AMPHENOL C091-T3362-000 or equivalent
8	Vibration	20g to 2kHz
9	Shock	100g, 11ms
10	Enclosure protection	IP 67
11	Enclosure material	1H18N9T, AISI 304

SCHEMATIC DIAGRAM



Peltron Towarzystwo Produkcyjno Handlowe Sp. z o.o.

ul. Turystyczna 4, 05-462 Wiązowna

tel. +48 (22) 615-63-56 fax: +48 (22) 615-70-78 email: peltron@home.pl

