



PRESSURE TRANSDUCERS NPX SERIES

Pressure transducers of NPX series are basic transducers to measure relative and absolute pressure of gases and liquids also chemical aggressive within span from 0 (-1) up to 1000 bar.

CHARACTERISTIC

- very good stability and accuracy
- small size and weight
- high performance
- good reliability

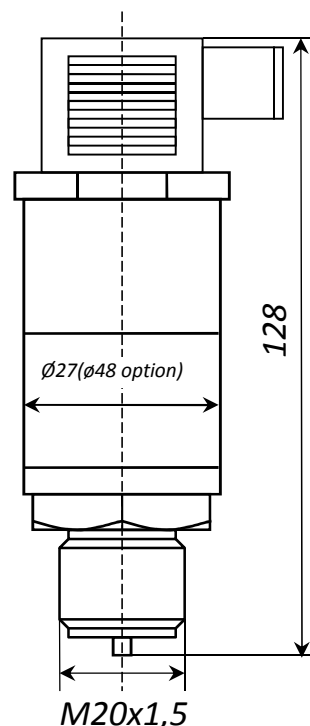
CONSTRUCTION

The basic element of this series is a piezo-resistive sensor placed in case made of stainless steel. Electronic board converts signal from this sensor to one of standard analog voltage or current output signals.

TECHNICAL DATA

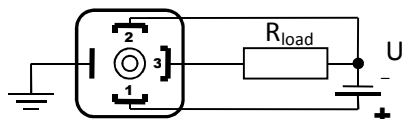
| | | | | | | | | | | | | |
|-------------------------------------|------|------|-----|-----|--------|---|----|----|----------|-----|------|------|
| SMR (standard measure ranges) [bar] | -0,2 | -0,5 | 0,2 | 0,5 | 1 | 5 | 10 | 20 | 100 | 200 | 300 | 1000 |
| Overloading [bar] | 2,5 | | | | 3 x MR | | | | 1,5 x MR | 700 | 1100 | |

| | |
|---|---|
| 1. Power supply [VDC] | <ul style="list-style-type: none"> • 15÷30 for output signal 0÷10V (three wires) • 10÷30 for output signal 0÷5V (three wires) • 5÷12 for output signal 0÷3V (three wires) • 10÷36 for output signal 4÷20 mA (two wires) |
| 2. Output signals | <ul style="list-style-type: none"> • 4 ÷ 20mA $R_{load} \leq (U - 10) V / 0,02A$ • 0 ÷ 10V $R_{load} \geq 10 k\Omega$ • 0 ÷ 5V $R_{load} \geq 10 k\Omega$ |
| 3. Linearity [% MR] | • ≤0,5 • ≤0,25 • ≤0,1 |
| 4. Long term stability | ≤0,5 % MR |
| 5. Temperature ranges [°C] | <ul style="list-style-type: none"> • ambient -20 ÷ 80 • medium -30 ÷ 130 • storage -30 ÷ 80 |
| 6. CTR (compensation temperature range) | 0 ÷ 70°C |
| 7. Temperature linearity within CTR | <ul style="list-style-type: none"> • zero ≤ 0,25% MR / 10°C • range ≤ 0,3% MR / 10°C |
| 8. Enclosure protection | • IP65 • IP68 |
| 9. Pressure connectors | <ul style="list-style-type: none"> • G¹/₄" • M20x1,5 • others |
| 10. Electrical connectors | • DIN43650 |
| 11. Materials | <ul style="list-style-type: none"> • diaphragm 316L • case 316L • pressure connectors 316L |
| 12. Mass | 350 g |

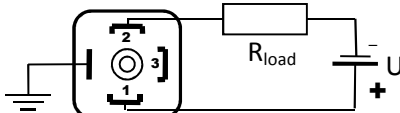


Schematic diagrams

Three wires connection



Two wires connection



Peltron Towarzystwo Produkcyjno Handlowe Sp. z o.o.

ul. Turystyczna 4, 05-462 Wiązowna

tel. +48 (22) 615-63-56 fax: +48 (22) 615-70-78 email: peltron@home.pl

XIV Wydział Krajowego Rejestru Sadowego, Numer KRS 000190284, NIP 113-00-18-140, Regon: 006210883

PELTRON
www.peltron.pl